



BIG LIFE
FOUNDATION

QUARTERLY REPORT

OCTOBER | NOVEMBER | DECEMBER

2025



Photo: Joshua Clay

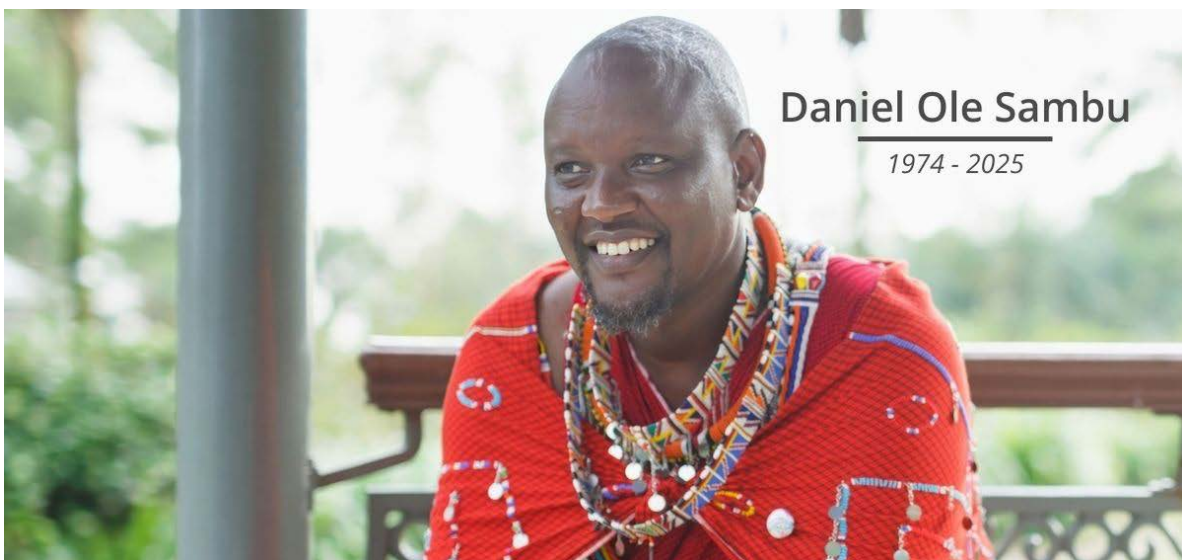
FROM THE FIELD

As we reflect on the year behind us, we do so with both immense pride and profound sorrow. In the final days of the year, we lost our beloved Predator Protection Coordinator, Daniel Ole Sambu. Daniel was more than a colleague—he was a steady presence in the field, a fierce advocate for coexistence, and a trusted partner to the communities and rangers he worked alongside every day. His passing has cast a long shadow over the activities outlined in this report and over all of us who had the privilege to know him. The scale of what our teams accomplished last year was extraordinary, yet it is impossible to turn these pages without feeling the weight of his absence.

And still, the work continues—because that is what Daniel believed in most. Across more than 2 million acres of wilderness, our rangers remain steadfast in their commitment to protecting wildlife and supporting the communities who share this landscape. Through coordinated patrols, intelligence-led operations, human-wildlife conflict mitigation, and deep collaboration with local leaders, they safeguarded critical habitat and helped ensure that elephants, lions, and countless other species continue to roam free. Their 4th Quarter achievements are a testament not only to discipline and skill, but to courage and heart.

This report honors both the measurable impact of our operations and the people behind that impact. It reflects the dedication of the men and women on the ground—many from the very communities most affected by conservation challenges—who stand watch day and night. And it reflects you. Your partnership makes this work possible. Together, we carry forward Daniel's legacy: protecting nature for the benefit of all, with resilience, integrity, and unwavering resolve.

Richard Bonham
Co-Founder and Executive Chairman
Big Life Foundation Kenya



WHERE WE WORK

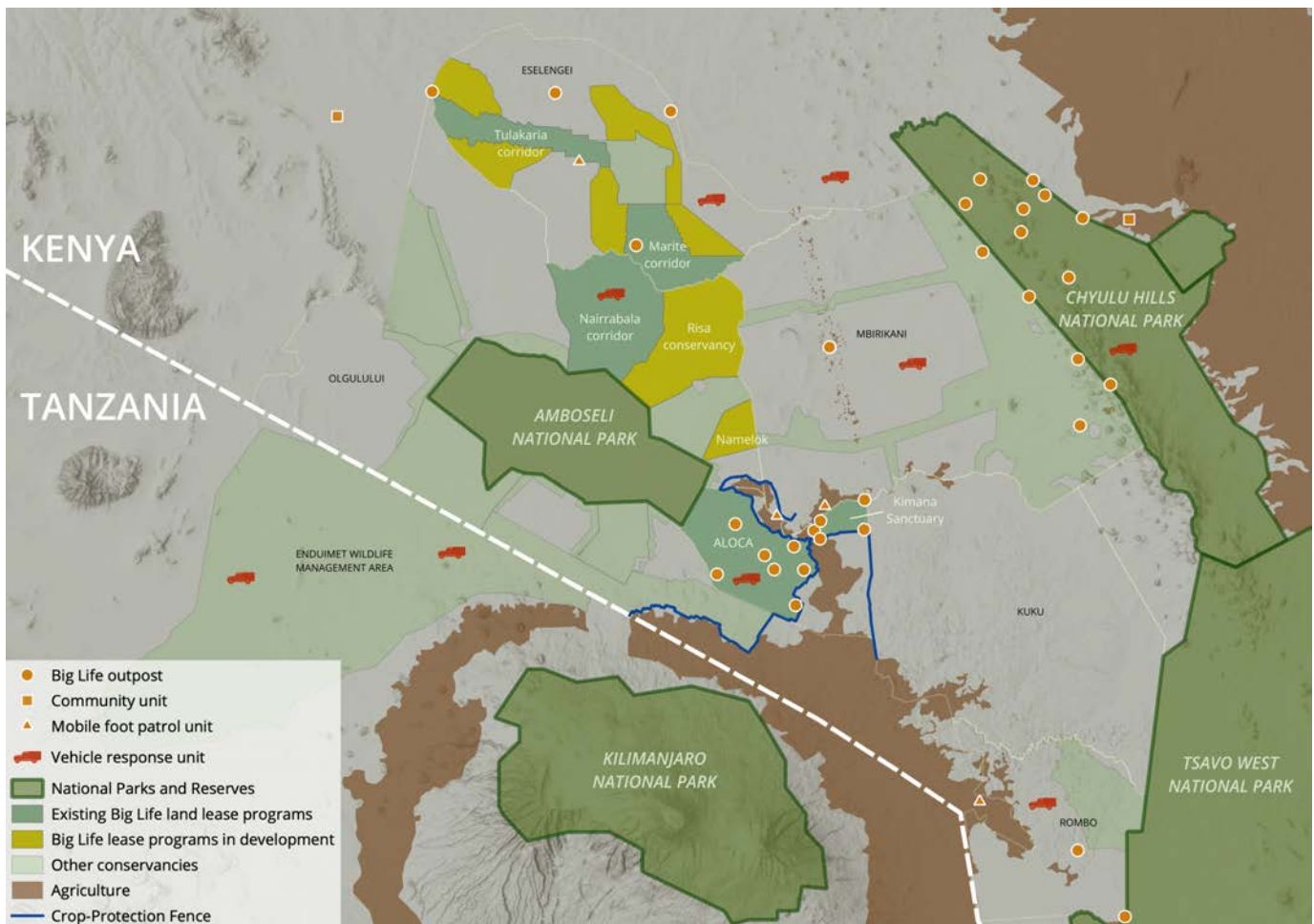
Big Life Foundation's (Big Life) Area of Operation (AOO) covers approximately 2 million acres across the Amboseli-Tsavo-Kilimanjaro (Greater Amboseli) ecosystem in East Africa. Our team of 500+ helps to protect and secure wildlife and critical habitat stretching from the rangelands north of Amboseli to the Chyulu Hills and Tsavo West National Parks in the east, and south to Kilimanjaro National Park. The area is a central connection point for migrating wildlife and contains some of the most important habitat left in Africa. Big Life was the first organization in the region to conduct collaborative cross-border patrols between Kenya and Tanzania.

Our AOO is divided into a core area with a permanent ranger presence and regularly patrolled by mobile units, a non-core area where mobile units respond based on need and are actively covered by our intelligence network, and adjacent areas where we provide support as needed. The level of Big Life support provided varies between outposts.

Core AOO: Eselengei, Kimana, Mbirikani, Nairrabala Conservancy, Rombo, Chyulu Hills National Park, and Enduimet Wildlife Management Area (Tanzania)

Non-Core AOO: Amboseli National Park, Mailua Ranch, Merrueshi Ranch, Nasaru-Olosho Conservancy, Olgulului, Osilalei Ranch, Taveta Area

Adjacent*: Kuku, Tsavo West National Park



* Except for intel-related arrests, incidents that occurred in adjacent areas are not reflected in this report.

WILDLIFE PROTECTION

Big Life strives to prevent the poaching of all wildlife within our area of operation. We track and apprehend poachers and collaborate with local prosecutors to ensure that they are punished to the fullest extent of the law. One of the largest employers of local Maasai in the ecosystem, Big Life's community rangers are expertly trained and well-equipped to tackle a variety of wildlife crimes.

Since our inception, poaching of all animals has dramatically declined in our area of operation.

Our **2025 Q4** ranger activity in Kenya and Tanzania¹ is summarized below:

OVERVIEW

Big Life employs Maasai rangers from local communities who work collaboratively with a vast informer network and a number of tools to undertake a variety of activities including anti-poaching and trafficking, conflict mitigation, community support and much more.

Total Staff: 593	Rangers: 391
Ranger Units: 47	Tracker Dogs: 2
Mobile Ranger Units: 13	Permanent Outposts: 33
Aerial Surveillance Hours: 45.4	Rangers Trained: 38
Total Suspects Arrested: 30 YTD Total: 209	Total Arrest Incidents: 17 YTD Total: 113
Kilometers Patrolled This Quarter: On foot: 58,889 By vehicle: 144,330 Q4 TOTAL: 203,219 YTD TOTAL: 781,776	Total Kilometers Patrolled Since Inception (2011): On foot: 1,817,855 By vehicle: 5,370,456 TOTAL: 7,188,311

WILDLIFE CRIME & ANTI-TRAFFICKING

Following the arrest of suspects by Big Life rangers, our Prosecution Officer monitors court cases to ensure that maximum penalties are pursued. Meanwhile, Big Life's intelligence team remains actively involved in investigating wildlife trafficking, both in the immediate ecosystem and beyond.

SUSPECTS ARRESTED Poaching - Bushmeat: 10 Poaching Intention: 2 Trophy Possession: 11 Wildlife Trafficking: 6	RECOVERED ITEMS Ivory: 33.4 kg Rhino horn: 0.1 kg Snares: 79 Other: bushmeat (235.9+ kg), owl eggs (7), live tortoise (2), live turtle (1), live pangolin (1), tools/weapons (109)
--	--

INCIDENTS Poaching - Bushmeat: 6 Poaching intention: 2 Trophy Possession: 6 Wildlife trafficking: 3	PROSECUTIONS Cases - Concluded: 5 Cases - Ongoing: 1,382 suspects
MORTALITIES - ELEPHANT Human-Elephant Conflict: 1 Poaching: 0 Natural Causes: 1 Unknown: 2 Human-related: 1	MORTALITIES - OTHER (<i>excluding large predators</i>) Bat eared fox (1), Civet (1), Dik-dik (1), Duiker (1), Eland (3), Gazelle (2), Giraffe (16), Impala (1), Mongoose (1), Snake (1), Wildebeest (2), Zebra (7)
INJURIES - ELEPHANT Elephants Injured: 10 Elephants Treated: 5	RESCUES/TREATMENTS - OTHER ANIMALS Elephant, (2), Lion (1), Giraffe (2), Zebra (1)

RHINO INTENSIVE PROTECTION ZONE

There are **nine** known Eastern black rhinos in Big Life's area of operation. They spend most of their time in the densely-forested Chyulu Hills National Park, protected by dedicated Big Life rangers and the Kenya Wildlife Service. In addition to monitoring and protecting the resident rhinos, Big Life has been working to improve and maintain infrastructure in the rhino area, the goal of which is to maintain Intensive Protection Zone (IPZ) status, which will allow for the future inbound translocation of rhinos from other territories.

Rhino Mortalities: 0 Rhino Births: 0	Rhino Snares Found: 0
Rhino Protection Rangers: 63	Dedicated Rhino Outposts: 10 Dedicated Rhino Units: 10
RHINO MONITORING Direct Sightings: 0 Indirect Sightings (<i>via camera trap</i>): 26 Spoor Sightings: 18	INFRASTRUCTURE Fencing: 70+ km constructed by SWT to date Water Points: 3 Camera traps: 42

NOTABLE UPDATES (click to read):

- Big Life's Drone Unit successfully helped reunite [a lost baby lion cub](#) with its mother.
- Rangers [supported the relocation](#) of two notorious crop-raiding elephants to a different ecosystem.
- A [baby rhino calf was born](#) in the Chyulus, the 2nd in under two years

HUMAN-WILDLIFE CONFLICT MITIGATION

Human-Wildlife Conflict (HWC) takes three primary forms across Big Life’s area of operation: crops raided by wildlife, particularly elephants; livestock killed by predators, such as lions; and humans injured or killed due to living in close proximity with wildlife.

Our **2025 Q4** activity is summarized below:

HUMAN-ELEPHANT CONFLICT MITIGATION

Poaching continues to pose a significant threat, but many elephants face an even bigger challenge: conflict with humans. As the human population increases, so do competing land uses, such as farming and cattle grazing. As humans compete for limited resources like water, land, and grass for livestock, we further encroach onto what were once wild lands. With less space to share, people and animals now come into direct contact at an alarming rate and often with deadly results.

Crop-Raiding Incidents: 19 Crop-Raiding Incidents Involving Elephants: 18	Acres Damaged: 7.75 Acres Damaged by Elephants: 7.25
Crop Raids Prevented by Big Life: 22	Elephant Retaliatory Hunts Attempted: 0 Retaliatory Hunts Stopped: 0
Crop-Protection Fence Constructed to Date: 100 km Crop-Protection Fence Maintenance Workers: 31	Non-crop-raiding, elephant-related incidents*: 20 <i>*including water tanks/pipes damaged by elephants, boma destruction, etc.</i> Livestock Killed by Elephants: 7

PREDATOR PROTECTION

Big Life protects vulnerable predators in the ecosystem in collaboration with partners and local communities. The core component of Big Life’s predator protection program in Kenya is livestock compensation, which reduces the motivation for retaliatory killing in response to livestock depredation.

The Predator Compensation Fund (PCF) pays Maasai livestock owners a portion of the value of their livestock lost to predators, on the condition that no predators are killed in retaliation. Big Life manages PCF on Mbirikani, Eselengei, and the Kimana Conservancy. Given the success of this program, the goal is to continue expanding PCF across the entire ecosystem.

The second part of Big Life’s predator protection program in Kenya is the Maasai Olympics, which was established in 2012 as an alternative for the traditional killing of lions. At the Maasai Olympics, young warriors can compete for recognition, prove bravery, and attract girlfriends through a sports competition based on traditional warrior skills. The 7th edition of the games will commence in June 2026, with the final taking place in December 2026.

Lion Mortalities: 3 (1 HWC, 1 natural, 1 unknown) Violations of PCF: 0 Lion Retaliatory Hunts: 5 Retaliatory Hunts Stopped: 2	Additional Predator Mortalities (human-related or unknown): Hyena: 5 (2 HWC, 1 poisoned, 2 vehicle) Serval: 1 (vehicle)
Compensation Issued for: 91 Cows: \$18,754 560 Sheep/Goats: \$18,800 2 Donkeys: \$129 Q4 TOTAL: \$37,683 YTD TOTAL: \$101,100	Livestock Killed by Predators: Caracal: 9 Cheetah: 33 Hyena: 318 Jackal: 155 Leopard: 4 Lion: 127

ADDITIONAL WILDLIFE CONFLICT

Humans Injured: 5	Wildlife Responsible for Injuries: elephant (3), hyena (1) lion (1)
Humans Killed: 1	Wildlife Responsible for Death: elephant



SECURING WILDLIFE HABITAT

The Amboseli ecosystem is one of our planet's surviving natural treasures. It is also home to almost 200,000 people. Big Life and our partners have taken on some of the most complex conservation challenges and been successful. But the demands of an increasing human population, and unplanned development, have already blocked some key wildlife corridors and habitats. If this continues, space will run out, decimating Amboseli's wildlife populations and depriving human communities of the natural resources that they rely on.

Big Life is working with local communities to protect land that is strategically important either as wildlife movement corridors or dispersal areas but is also valuable to the local livestock economy as a grazing resource. This protection can be achieved through land-use planning and the establishment of conservancies, including the legal and management systems necessary for their effective functioning, and assisting to develop income-generating opportunities such as tourism.

Our **2025 Q4** activity is summarized below:

LAND-USE PLANNING & SUBDIVISION

This work has recently accelerated as a process called 'land subdivision' is sweeping Amboseli, fragmenting large tracts of community-owned land into thousands of small, privately-owned parcels. Resultant land sales, land-use conversion, and fencing have the potential to destroy this irreplaceable ecosystem. Big Life is supporting our partner communities by investing in proper land-use plans, using spatial planning to create area designations for all land-use types (e.g. settlement, agriculture, rangeland, and conservancy/wildlife corridors). The outcomes are extremely positive, communities are reserving large areas for wildlife conservation and livestock grazing, and a series of corridors will connect these habitats across the ecosystem.

CONSERVANCY DEVELOPMENT & LAND LEASES

Big Life believes that land belongs best in the hands of its traditional owners. But following the recent subdivision and privatization of historically communal ranches, widespread land sales have the potential to destroy and fragment large areas of natural habitat, and result in landless communities. Our involvement in land subdivision planning has helped ensure that important wildlife habitats have been earmarked for protection, but things don't stop there. The next critical step is to work with landowners to create functional community conservation areas, and develop revenue streams from these areas or risk their eventual conversion to other land-uses.

Big Life's conservation land lease agreements are a way of ensuring continued local ownership AND generating the financial returns that those landowners need. These lease agreements are willingly entered into by both parties, the terms of which restrict land conversion and fencing in exchange for annual lease payments.

Kimana Group Ranch subdivided two decades ago, and while some landowners sold their land parcels, the majority came together to form six '*ALOCA Kimana Conservancies*', which border Amboseli NP and protect the first section of the Kimana Wildlife Corridor. With past support from Sheldrick Wildlife Trust, Big Life has lease agreements with hundreds of landowners in these conservancies, protecting thousands of acres of critical wildlife habitat. These lease payments ensure that land-use is compatible with conservation and pastoralism and are now made possible thanks to Aqualia International Foundation.

Kimana Sanctuary, at the easternmost part of the Kimana Corridor, was one of the first community-owned and run wildlife conservancies in East Africa. After years of mismanagement, at the request of the community, Big Life took over management in 2017. With support from the Sheldrick Wildlife Trust and D.N. Batten Foundation, Big Life set about getting the Sanctuary back on its feet. Since 2021, a [partnership](#) with our partners at Angama Amboseli has boosted tourism revenue and allowed the Sanctuary to become economically self-sufficient, simultaneously covering the costs of its protection and increasing income to its landowners.

Olgulului Group Ranch almost entirely encircles Amboseli National Park and contains multiple important dispersal areas and wildlife movement corridors. The 37,500-acre *Nairrabala Corridor* connects Amboseli National Park with the Eselengei conservancies and seasonal wildlife grazing areas to the north. This connection is heavily used by wildlife including elephants. Big Life's efforts to establish ranger operations and sign leases in Nairrabala began in 2024, and lease signing is ongoing. The next step that has been agreed to with the Olgulului community is creation of *Risa Conservancy*, which will protect a dispersal area adjoining Nairrabala to the east, as well as signing leases to protect an important area of rangeland south of Ole Narika Conservancy.

Eselengei Group Ranch, in the north of the ecosystem, has designated two wildlife corridors (total area of ~35,500 acres) connecting the 13,000-acre Selenkay Conservancy with the rest of the ecosystem. Big Life has signed conservation leases with all 700 individual owners of these two critical wildlife corridors, named *Tulakaria* and *Marite*. Starting in 2025, discussions begun to expand these community-protected areas by 42,000 acres, to include another 1,000 landowners. Lease signing started in September.

Mbirikani Group Ranch is where Big Life's headquarters are located and shares a boundary with the Chyulu Hills National Park. During a land subdivision process that was heavily supported by Big Life, the Mbirikani community created a 123,000-acre conservation area. Big Life is now working with the Mbirikani community to formalize partnerships for land leasing and conservancy development.

<p>ALOCA: Landowners benefitting from lease fees: 334 Number of acres protected: 20,040 Other: Borehole drilling for livestock project completed, AGM held, Lease renewal MoU approved, Semi-annual lease fee paid</p>	<p>Kimana Sanctuary: Landowners benefitting from lease fees: 844 Number of acres protected: 5,700 Paying visitor days: 995</p>
--	---

<p>Eselengei: Landowners signed lease agreement: 700 <i>(Marite (399) and Tulakaria (301))</i> Number of acres under lease: 32,900</p> <p>Marite & Tulakaria expansion Landowners signed lease agreement: 149 Number of acres under lease: 7,003</p>	<p>Olgulului: Landowners signed lease agreement: 2,634 <i>(Nairrabala (1,738) and Risa (896))</i> Number of acres under lease: 55,314 <i>(Nairrabala (36,498) and Risa (18,816))</i></p>
<p>Mbirikani: Other: A draft co-management agreement developed and agreed pending finalization for the Mbirikani conservation area</p>	<p>Rombo: Other: Strategic Environmental Assessment still awaiting NEMA approval</p>

NOTABLE UPDATES (click to read):

- A [miraa harvester was arrested](#) for arson after triggering a wildfire that took 50 rangers and 5 days to put out. More than 6,000 acres were damaged.
- Big Life’s Super Cub [got a new engine](#), which will support aerial monitoring and surveillance.



Amboseli’s arid rangelands are hurting. High stocking rates of livestock animals, and the breakdown of traditional rotational grazing practices, has resulted in unsustainable pressure on the savannah grasses, and over-harvesting of natural resources in all forms has degraded habitats. Big Life is working to combat these threats to the ecosystem.

Our **2025 Q4** activity is summarized below:

LAND

Rangers actively protect the land by fighting against illegal habitat destruction activities such as logging or charcoal production, sand and water extraction, and combatting bushfires. Rangers also enforce protected area rules in conservancies and national parks, where encroachment activities like trespassing, settlement, and grazing are illegal and harmful to critical ecosystem habitats.

Lastly, since 2017, we’ve partnered with local communities, partner NGOs, and local government to implement a [carbon credit program](#) in the Chyulu Hills to protect it from deforestation and overgrazing. The program generates significant income for the management of the Chyulu Hills National Park and creates benefits for surrounding communities.

Suspects Arrested* for Habitat Destruction: 4 Habitat Destruction Arrest Incidents: 3 <i>*Sometimes released depending on severity of crime</i>	Non-Arrest Habitat Destruction Incidents: 15
	Incidents of Community Grazing, Conservancy, and Subdivision Land Use Rules Enforcement: 17

RESTORATION

Overgrazing in an arid environment has resulted in large areas without a protective covering; soils are eroding, and gullies scar the landscape. The little rain that does fall runs straight off the hard surfaces, depriving the land of moisture and resulting in a downward spiral. Large areas have been rendered unproductive, with negative impacts for both wildlife and people.

Thanks to support from Conservation International and Apple Inc., Big Life is working with the Mbirikani community to restore 10,000 acres of rangeland back to health. Thanks to funding from WWF and Twende, and implemented in partnership with JustDigg It, communities have added new restoration sites on both Mbirikani and in ALOCA.

Rangeland Restoration Area: 16,546 acres Active restoration: 3,655 acres Natural regeneration: 12,891 acres	Bunds installed Q4: 0 YTD: 22,713 Total: 190,529
Total acres reseeded: 3,655 to date	Number of people employed: 7

COMMUNITY

Winning the hearts and minds of the community and providing a mutual benefit through conservation is the only way to protect wildlife and wild lands far into the future. To that end, Big Life provides a number of services in support of the community generally, including education, healthcare and income-generating initiatives, and also lesser-known activities, such as growing food for local students through a sustainable farming project, using ranger vehicles as ambulances, arresting criminals for community crimes (e.g., theft), conducting human and/or livestock search and rescue operations, and more.

Community Crime Incidents: 0	Suspects Arrested: 0
Human Search and Rescue Incidents: 5	Livestock Search Incidents: 2
Other Community Support Incidents: 3 – <i>transport (3)</i>	
Beehives: 73 in 6 apiaries	Sustainable Farms: 1

Big Life invests in the future of participating communities by funding teachers' salaries, providing scholarship funds for local students, and implementing conservation-specific curriculum in classrooms and communities. Additionally, Big Life is continuing to provide school lunches to hungry children in the wake of last year's drought.

Our **2025 Q4** activity is summarized below:

Long-Term Student Scholarships Awarded: 463 Boys: 164 Girls: 299	Students Reached by Conservation Lessons: 915
One-Time Student Scholarships Awarded: 19	Students Reached by Club Activities: 315
Amount paid in Scholarships: \$10,287	School Visits: 21
Tertiary-Level Graduates: 5	National Park Trips: 1
	Teachers' Salaries Paid: 8

NOTABLE UPDATES (click to read):

- Congratulations to [Eunice Lemujini on graduating from university](#) with a scholarship from Big Life. She hopes to pursue a career in conservation.
- We are still mourning [the loss of Daniel Ole Sambu](#), who passed away in December following an illness.

Healthcare is a key part of Big Life’s community support program and by working in close coordination with the Kajiado South Department of Health, Big Life facilitates outreaches that provide primary healthcare, family planning services, immunizations, and antenatal check-ups across the Greater Amboseli ecosystem.

Big Life is also working to improve sexual and reproductive health and rights education for both the wider community and for the youth and adolescents in local schools. This approach not only improves individual health outcomes but also helps to build more resilient and empowered communities.

Our **2025 Q4** activity is summarized below:

Back-Pack Medical Outreaches: 126	CHV Household Visits: 17,441
Family Planning Dialogue Days: 164	People De-wormed: 4,949
Sexual & Reproductive Health & Rights school talks: 55	Immunizations Administered: 5,945
Child Rights Club Meetings: 110	Family Planning Services Provided: 3,870
	People Reached with Family Planning Information: 56,635
	People receiving primary healthcare: 5,857



Thank you to our wonderful partners and supporters for helping make our work possible. Together we can save wildlife and wild lands - now and for future generations.

ⁱ Livestock losses and crop-raiding incidents from Enduimet Wildlife Management Area (Tanzania) have been excluded from this report as they aren't part of the PCF program nor have comparable crop-raiding mitigation measures.