



FOUNDATION  
**GREAT PLAINS**

CONSERVING AND EXPANDING NATURAL HABITATS

ESTABLISHED 2004

# FROM THE FIELD

## LATEST IMPACT UPDATES FROM OUR GREAT PLAINS INITIATIVES

### 2025 Q2 IMPACT REPORT | APRIL - JUNE

To our wonderful Great Plains Supporters,

First of all, thank you for your incredible support. None of what you are about to read is even remotely possible without your generosity. We don't take it for granted.

I have long held the belief that the success of conservation is in taking care of today while having an eye on tomorrow and we can't discard one notion or the other. Moving elephants, collaring them, (as you will see here) and also securing the land with anti-poaching efforts. Beyond the immediate, education and school feeding schemes, while obviously good for our fellow humans, helps fortify the bonds between us, our communities and conservation for a more humane and balanced world. It looks to the future as we will eventually hand over a better environment to caring custodians.

We are both very proud of the efforts of our Great Plains Foundation teams. It is a highly run organisation with no waste, a highly agile and fit NGO.

Many thanks once again for your interest and your support.

Dereck & Beverly Joubert  
Founders, Great Plains Foundation

# CONSERVATION

Biodiversity • Healthy Ecosystems • Endangered Species




## PROJECT REWILD

Zimbabwe | Translocations of wildlife and post-translocation monitoring

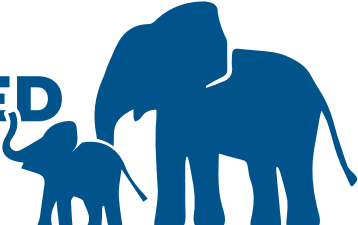
In June, the team in Zimbabwe achieved another milestone in our conservation efforts by successfully translocating another 479 impalas in to the Sapi Reserve. This translocation follows the first impala translocation in 2022, with the aim to restore degraded wildlife populations, create a reliable prey base for predators and promote ecosystem balance. Ahead of the 800km translocation journey by truck across Zimbabwe, the impalas underwent thorough disease testing.



Monitoring of the elephants translocated in 2022 remains a priority of the team, who diligently track and observe six translocated herds and nine resident elephants. Monitoring efforts involve documenting the elephants' physical health, social dynamics, movement patterns, and overall well-being. To ensure consistent, accurate and reliable monitoring, GPS/VHF collars play an essential role. This quarter the team, in partnership with African Wildlife Conservation Management, recollared 13 elephants and collared 3 new elephants. Great Plains partnered with Conservation Lower Zambezi to collar five elephants who had crossed into Zambia. The collaring of new elephants includes fitting a tracker to a secondary female in the herd. By incorporating this dual-collaring method, we are building a more resilient monitoring framework that strengthens the integrity of our research. The team was able to use the collaring opportunity to also collect samples from the elephants for further insight into relatedness, stress and diet.

**479**  **IMPALAS TRANSLOCATED**

**902** **ANIMALS TRANSLOCATED IN TOTAL**

**16**  **ELEPHANTS COLLARED**

# FEMALE RANGERS

*Botswana & Zimbabwe | Training and hiring Female Wildlife Rangers from local communities*

## OKAVANGO DELTA, BOTSWANA

Our female Ranger teams in the Okavango Delta continue to excel in conducting patrols and monitoring wildlife crime across 163,000 hectares of wilderness. Illegal fishing remains a key challenge and, over the past three months, the teams have been heavily engaged in vehicle, boat and helicopter patrols with the Botswana Defense force. Through their efforts they have managed, for now, to stem the influx of these poachers.



**“My name is Gagoope Lisa Kesietswe. Working as a Ranger has been one of the most impactful journeys I have embarked on, not just for my career but for my personal life. To be the bridge of the coexistence between humans and wildlife is what I believe is a great need I can explore and contribute towards.”**

Gagoope Lisa, Female Ranger

With rising water levels from the Okavango flood waters arriving from Angola those female Rangers who have recently acquired their driving licenses, have been put to the test, crossing deep water and tackling the thick mud. The ladies also took part in a community engagement sharing about opportunities and careers in conservation.

## SAPI, ZIMBABWE

This quarter the Female Rangers in Zimbabwe took part in the translocation of the impala, the elephant collaring exercise and continued their daily ecosystem monitoring.

Progress on tertiary education for the Female Rangers has also been significant Team Leader Rachel completed the first stage of her second year in a Bsc in Wildlife, Ecology and Conservation and Rumbidzai and Olivia finishing first semesters of a Msc in Sustainable Development.

**21**  **WOMEN CURRENTLY  
 IN THE PROGRAM**  
**5,801**  **KM PATROLLED** 

# CONSERVATION TEAM DEVELOPMENT

*Botswana & Zimbabwe | Building capacity and upskilling wildlife Rangers*

The wildlife Rangers' daily lives consist of monitoring their surrounding environment and wildlife. This quarter the Rangers in both Zimbabwe and Botswana took part in a comprehensive training program in Conservation Storytelling improving their ability to document and share their work with clarity and impact. The Rangers developed detailed observation skills, learned structured interview techniques, and practised turning patrol insights into well-structured reports. The training will also help the Rangers to share stories of life on the front line of conservation with their communities and donors.

**“Conservation Storytelling Training have been an eye-opening workshop for me, because it’s through storytelling that we share conservation ideas with our communities. We can change their mindsets by telling them what we encounter in the field.”**

Irene, Female Ranger, Botswana



The fitness of the Rangers continues to improve, with six of our Rangers crossing the finish line of the Gabarone Diacore Half Marathon in May and another a group of Rangers preparing for the Vic Falls marathon in July. Having milestones encourages the team to continue training towards a goal, and with consistency comes positive results both physical and mental.

**29 RANGERS TRAINED  
 IN CONSERVATION  
 STORYTELLING** 

# SUPPORTING PARTNER RANGERS

*Sponsoring equipment and accommodation for partner Ranger units*

## **CONSERVANCY RANGERS IN THE MAASAI MARA, KENYA**

The Olare Motorogi Conservancy in the heart of the greater Maasai Mara, bordering the National Reserve, is an essential corridor for wildlife, including the annual great migration of over 2 million wildebeest and zebras. The conservancies bordering the Maasai Mara national reserve act as buffers between the wildlife areas and communities. Olare Motorogi Conservancy has a team of Rangers working to ensure the protection of 35,089 acres of wilderness. Great Plains sponsored the build of 12 accommodation blocks at the conservancy head quarters to ensure comfortable conditions for the Rangers. The accommodation can sleep 24 Rangers, with a designated block for female Rangers.



## **ZIMPARKS RANGERS IN SAPI RESERVE, ZIMBABWE**

Great Plains is developing Zimbabwe Parks and Wildlife Management Authority (ZimParks)'s infrastructure at their Ranger post in the Sapi Reserve. This quarter saw the completion of insulated housing for Rangers, a kitchen canteen unit, septic tanks and other essential facilities to support the Rangers in the field. A borehole was drilled and the team look forward to installing the pump in the next quarter, alongside upgrading the solar system, electrics and the operations room. These upgrades enable the team to continue to patrol and protect this important ecosystem and the wildlife that move through it.

# CONSERVATION ROOTS

*Kenya | Planting indigenous trees for ecosystem restoration and carbon sequestration*

The team took advantage of the rainy season this quarter and planted 2,309 indigenous trees in Kenya. The trees have been planted across the Maasai Mara, restoring different landscapes, improving habitat for wildlife, ecosystem resilience against erosion and degradation. Each quarter we ensure community engagement in tree planting to ensure the project’s sustainability and future. This quarter 340 trees were donated to communities, and included a workshop on the advantages of re-forestation.



**“We extend our deepest gratitude to the Great Plains Foundation for your generous support through the provision of tree seedlings. The seedlings you provided are not just plants they are a symbol of hope and resilience. Your partnership reinforces our shared commitment to environmental conservation and community empowerment. Together we are planting the seed of change for this generation, and those to come, thanks in advance.”**

Jackson Ole Kirokorr, member of the Nkoilale community.

**2,309 TREES PLANTED**  
 \* \* \* \* \*  
**TOTAL TREES PLANTED: 54,565**

## SOLAR MAMAS

*Botswana | Bringing solar power to off-grid communities in Botswana through a women-led business*

This quarter marked the milestone of 900 household solar systems sponsored by Great Plains Foundation reaching communities in the Okavango Delta. The 8 Solar Mamas have been busy installing systems to off-grid families, bringing electricity and all the benefits that come with it. Benefits have ranged from human–elephant coexistence, education progress with light for homework, business progress, reduction in wood burning and more. The Solar Mamas have also donated their time free-of-charge to instal 50 systems to 10 disadvantaged families identified by the community social workers in each of 5 Okavango Community Trust villages.




The Solar Mamas have also been marketing in the region to boost their business, showcasing solar systems at both the annual HATAB conference and the Nkashi Classic. Next quarter the team hope to celebrate reaching 1,000 solar systems installed.

**“We are really blessed to have had this support from Great Plains Foundation”**

Seronga Solar Mama.

**“Great Plains Foundation support is such a good initiative in our communities”**

Council Secretary – Okavango District Council.

**100** NEW SOLAR SYSTEMS  
  
**900** SYSTEMS IN TOTAL

# NABOISHO WOMENS GROUP

*Kenya | Sponsoring a women-led business in the Maasai Mara to support education and healthcare*

The Naboisho Women's Group is a community-led organisation, sponsored by Great Plains Foundation, that consists of 3 businesses: bead products, soap and honey. The group aims to enhance economic opportunities and self-reliance among marginalised groups within a community in the Maasai Mara. Great Plains sponsors the raw materials of the businesses and buys the products for our safari camps. The beekeeping initiative consists of 5 community groups, (including 1 widowed women's group) managing 50 bee hives. The soap business includes 25 members making natural and herbal-scented soaps to sell to local markets and travellers. And the longest standing group, the beading group, has 85 members.



# 175 WOMEN EMPOWERED IN BUSINESS



# COMMUNITY BEEKEEPING BUSINESS

Zimbabwe | Sponsoring a beekeeping enterprise for rural farmers in Zimbabwe

Great Plains Foundation has partnered with NZATU and Wildlife Conservation Action in Zimbabwe on a community beekeeping project which aims to create sustainable income for local farmers, and support ecosystem health. This quarter 50 farmers received two beehives each along with training on beekeeping and its benefits. To improve gender equality, 60% of those trained were women, creating opportunities for inclusive, sustainable income generation. The next phase will include more hives and additional training and equipment.



**50**  **FARMERS TRAINED**   
**60% WOMEN**

# CONSERVATION EDUCATION

*Educating and inspiring the next generation of conservation leaders*

## CONDUCTING UNDERGRADUATE FIELDWORK IN ZIMBABWE

The Great Plains Foundation team in Zimbabwe has been working closely with the Chinhoyi University of Technology (CUT), supporting capacity building of the next generation of conservation leaders. This quarter, the team hosted 14 students for a fieldtrip to the Sapi Reserve, covering practical sessions on aquatic ecology, mammalogy and taxidermy in the Mid-Zambezi Valley region. The fieldtrip gives the students practical experience in real-world environments; engaging directly with ecosystems, wildlife behaviour, habitat dynamics, and ecological processes. This form of learning encourages critical thinking, problem-solving, adaptability and instils a sense of responsibility for protecting biodiversity - all essential skills for effective wildlife management and conservation.



**“Field-based practical learning is essential to ecological education. By immersing ourselves in the natural world, we can observe the intricate relationships between species and their environments, which deepens our understanding of ecological principles.”**

Thomas Mutonhori, Great Plains Ecologist, Sapi Safari Area.

**14 UNIVERSITY STUDENTS HOSTED** 

## CONSERVATION EDUCATION CAMP – GUARDIANS OF THE WILD ZIMBABWE

Many communities near wildlife areas rely on natural resources for their livelihoods, making it crucial to educate children about environmental protection, as their well-being is closely tied to these resources. Great Plains has partnered with Wildlife Conservation Action (WCA) to enhance conservation education in several primary schools located at southern boundary of the Sapi Reserve. World Environment Day in June offered an exciting opportunity to raise awareness in schools about the importance of protecting our environment. The team reached 40 students, who were carefully selected as being a member of their school's environmental club (a voluntary club in all schools for those with a special interest in conservation). The key themes highlighted the importance of reducing environmental pollution, recycling of waste, including plastics, and understanding the impacts of deforestation and pollution on wildlife ecosystems. This event aimed to instil a sense of responsibility for environmental protection among the participants.

**“Field-based practical learning is essential to ecological education. By immersing ourselves in the natural world, we can observe the intricate relationships between species and their environments, which deepens our understanding of ecological principles.”**

Thomas Mutonhori, Great Plains Ecologist, Sapi Safari Area.



**40 SCHOOL CHILDREN  
REACHED WITH CONSERVATION  
EDUCATION OUTREACH**



**SPONSORED CONSERVATION DIPLOMAS IN KENYA**

The Kenya Wildlife Trust Conservation Leadership Program bridges the gap between science, policy and community action when it comes to conservation and ecosystem stewardship in Kenya. This quarter the students joined industrial attachments, with placements ranging from researching the negative impacts of alien invasive species in Amboseli National Park, to understanding the human-lion conflict in the Samburu National Reserve. Great Plains Foundation has also sponsored 3 new students to embark on the 2-year program in Wildlife Management, including 2 young women from the Maasai Mara. One of those new students, Joyce, 19, comes from Olkinyei Conservancy in the Masai Mara. She was active in her school’s wildlife club and she stood out for her commitment to becoming a conservation voice in her community - especially for girls.



“We extend our sincere appreciation to Great Plains Foundation for your continued support and partnership in making this scholarship program a success. Your support not only opens doors to education, but also nurtures responsibility, leadership, and a strong sense of purpose among the beneficiaries. Thank you for believing in their potential and in the difference this program continues to make.”

Kenya Wildlife Trust

**3** NEW CONSERVATION  
**DIPLOMA SCHOLARSHIPS**  
**9** STUDENTS SPONSORED  
**IN TOTAL** 

# EARTH ACADEMY

*Botswana | Training academy upskilling youth into employment*

The Great Plains Earth Academy was established to support skills development and tackle unemployment in rural northwestern Botswana. The Academy hosts both vocational training for young people, to support their progress into employment and skills trainings that fill capacity gaps identified by communities. Great Plains Foundation partners closely with the communities to identify trainings that are most needed to benefit the community. This quarter saw the start of this year's Earth Academy trainings, with 3 courses hosted; Hospitality, Fire Fighting and First Aid. The hospitality training hosted the largest number of trainees at 21, with the other courses, Fire Fighting and First Aid, hosting 10 trainees each.



**41** STUDENTS UPSKILLED  
ACROSS **3** TRAINING  
COURSES



# SCHOOL FOOD PROGRAM

*Kenya | Distributing nutritious meals to rural schools in Kenya to boost education*

The start of a new school term in Kenya saw the delivery of nutritious ingredients to feed 14,162 pupils for the term ahead. Ensuring meaningful support to education in rural Kenya is essential to the development of the region, and the resulting environmental stewardship. The School Food Program spans 54 schools across 3 landscapes Great Plains Foundation partners with in Kenya; communities in the Maasai Mara, Chyulu-Amboseli region and Shompole community. The schools have reported that absenteeism is a thing of the past, because students and their parents know that there is food in school. Attendance and performance at school are growing continuously and the benefits of this initiative are being felt by the community at large.



**“As a parent, I want to sincerely thank Great Plains Foundation for their help. Having this food in school is now a motivation and our children do not want to miss school. As a result, I have seen improvement in performance.”**

John Kilipan, Parent at Orkina Primary School

**991,340 MEALS SPONSORED**      

**TOTAL MEALS 7.1 MILLION**

**14,162 PUPILS RECEIVING FOOD DAILY**            

# COMMUNITY AMBULANCE

*Botswana | Sponsored ambulance to improve healthcare in rural Botswana*

With minimal access to healthcare, the communities bordering the Okavango Delta in Botswana raised the urgent need for an ambulance. The Great Plains Ambulance has been operating since October 2024 and this quarter transported 134 patients needing urgent medical care. The ambulance supports the five Okavango Community Trust villages, transporting patients to regional medical facilities and even hospitals (a distance of 167km of offroad driving). The ambulance delivers medication and service providers to clinics, improving healthcare connectivity and access in the region.



**“It is a relief now having this ambulance, as we can now cover most areas at a time and our patients don’t miss appointments and we are able to do referrals to bigger hospitals without a struggle on transportation”**

Nurse from Gudigwa Village

**134 PATIENTS ASSISTED**

# GRANT PROJECTS

Big Cats Initiative • Project Ranger



## BIG CATS INITIATIVE

Grant funding to NGOs worldwide to projects with a focus in big cat conservation

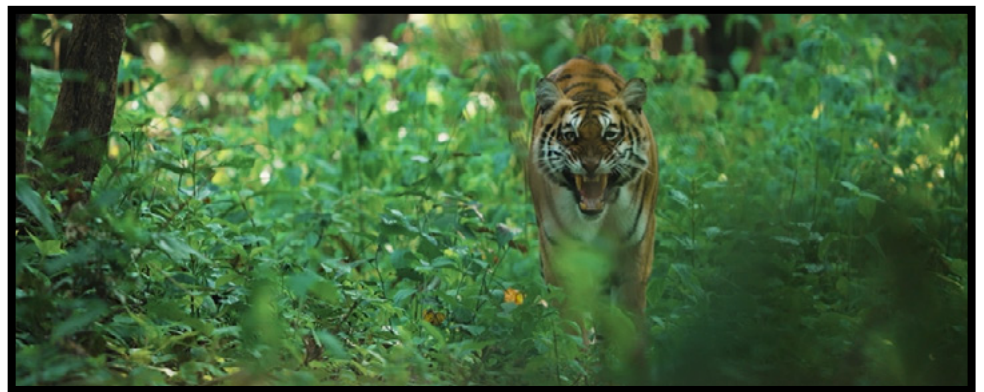


### BIOACOUSTICS RESEARCH GROUP, NEPAL

Big Cats Initiative Grantee

Bioacoustics Research Group are using technology to advance human-tiger coexistence in Nepal. The team are developing, non-invasive automated mapping of tiger presence using prey alarm calls. The team recently returned from their fourth trip to Nepal, where they gathered over 11,000 hours of audio data, were able to troubleshoot minor issues with the acoustic alarm system technology, and to identify local research and implementation partners to ensure the long term sustainability of the effort.

An interesting consideration for future research has been determining alarm calling behavioural differences between prey seeing tigers versus leopards.



### TSAVO CHEETAH PROJECT, KENYA

Big Cats Initiative Grantee

This quarter the Tsavo Cheetah Project began deploying BCI supported camera traps in across the conservancies and group ranches between and surrounding Tsavo East and West National Parks. This included the teams checking recorded sighting locations for evidence of cheetah, such as scent marking spots. Once the cameras are in place each ranch or conservancy is visited every four weeks. The Tsavo Cheetah Project's work also supports Kenya Wildlife Service with situations arising on the ground and the team plans to organize a targeted education workshop to ensure that KWS community responding officers possess the knowledge on cheetah behavior and ecology that is required to effectively assume their roles as custodians of wild cheetahs.



**WASIMA, TANZANIA**

*Big Cats Initiative Grantee*

WASIMA are working to improve human-lion coexistence in Western Tanzania. This quarter funding supporting the build of 11 carnivore-proof bomas benefitting 81 individuals and 11 households, securing a total of 351 livestock. In line with the community engagement and understanding work, 18 community meetings and night film shows were held and 240 minutes of radio coverage communicating lion and biodiversity conservation education and awareness, reaching 253,000 individuals in the landscape.



**CONNECT, BOTSWANA**

*Big Cats Initiative Grantee*

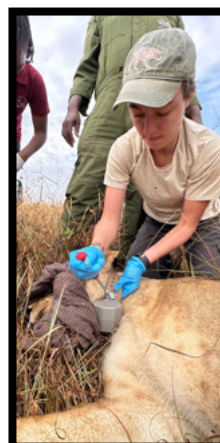
Conservation of Natural Ecosystems Trust (CONNECT) are promoting human-lion coexistence in the Southern Okavango Delta. CONNECT are fitting lions from key prides in the region with GPS/VHF collars to track movement. The aim is to set up early warning systems and rapid response teams to improve safeguarding both the community's livestock and the lions. This quarter the team focused on strengthening relationships with stakeholders on the ground and laying foundations for the monitoring program.



**COEXISTENCE FOR CATS, CATTLE & COMMUNITIES (C4)**

*Big Cats Initiative Grantee*

The C4 research project, led by researcher Lucrecia Aguilar, is understanding human-lion coexistence in the Laikipia region of Kenya. The project has collected extensive data for over 20 lions, 200 livestock herds and nearly 200 pastoralist community members. The SMART collars that are fitted to the lions also provides real-time lion locations to help prevent human-lion conflicts, if a lion is recorded moving close to a herd or community area.



# PROJECT RANGER

Granting funds to NGOs across Africa specialising in anti-poaching



## CONSERVATION LOWER ZAMBEZI, ZAMBIA

*Project Ranger Grantee*

Conservation Lower Zambezi (CLZ) is a Zambian non-profit organisation that has worked for nearly 30 years to protect the wildlife and ecosystems of the Lower Zambezi National Park. A critical component of CLZ's work is empowering Rangers and community scouts to carry out patrols, respond to poaching threats, mitigate human-wildlife conflict, and maintain surveillance infrastructure across this vast, ecologically vital landscape. Sponsorship of the Rufunsa Community Scout Unit ensures the continuous protection of this area, covering operational costs, salaries, fuel, rations, equipment and more.



## ANTIPOACHING TRACKING SERVICES (ATS), ZIMBABWE

*Project Ranger Grantee*

ATS Rangers work to ensure the safety of wildlife including white and black rhino populations in one of Zimbabwe's Intensive Rhino Protection Zones. ATS have increased their patrol presence and expanded their intelligence network to help identify the potential poachers in the region. The Rangers, while out on patrol, have confiscated hundreds of snares and made many arrests, while continuing to fight for the ending of illegal activity. In May alone the ATS team recorded 164 K9 Detections, 87 Snares and 8 Arrests.



# ENARAU CONSERVANCY, KENYA

*Project Ranger Grantee*

Project Ranger funded Ranger training in one the Maasai Mara region's newest conservancy's Enarau. As a new conservancy Enarau is playing a key role in expanding the network of the protected areas that buffer the wider Maasai Mara ecosystem and well-trained Rangers are an essential part of their work. The Ranger training included leadership training, physical fitness, field drills and ambush preparedness. The group of trainees included Enarau Conservancy's newly recruited female Rangers, reflecting Enarau's strong commitment to promoting gender inclusivity and creating equal opportunity for women in conservation roles. Great Plains Foundation team members were honoured to visit Enarau Conservancy in April to witness the rigorous training first-hand.



# BUMI HILLS ANTI-POACHING UNIT, ZIMBABWE

*Project Ranger Grantee*

The team were pleased to report on a quieter few months, showing their efforts to reduce illegal activity are proving successful. The team collected 159 snares and are proud to share that they have not lost an elephant to poaching in over 7 years now. One of the senior Rangers noted that they have not had to treat a single elephant for a snare wound in 2025, which is a testament to the methodological, careful patrols carried out. BHAPU continue the mission against illegal fishing, confiscating just over 25km of destructive nets and arrested the trader. The BHAPU are pleased to report the population of many antelope is increasing as well as the zebra population.



[WWW.GREATPLAINSFOUNDATION.COM](http://WWW.GREATPLAINSFOUNDATION.COM) | [INFO@GREATPLAINSFOUNDATION.ORG](mailto:INFO@GREATPLAINSFOUNDATION.ORG)



Facebook



Instagram



YouTube